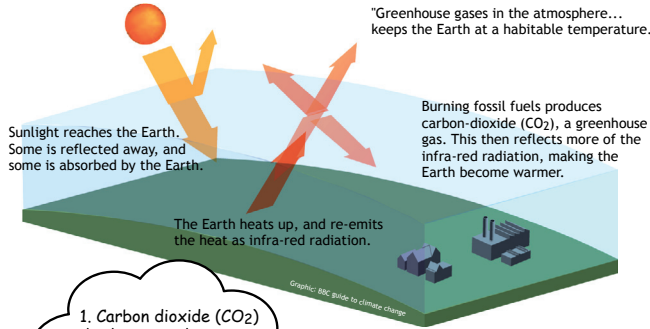


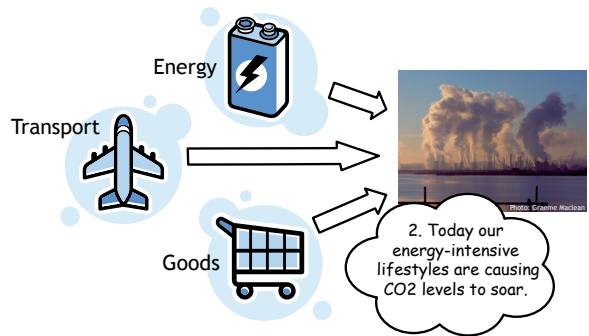
The Greenhouse Effect



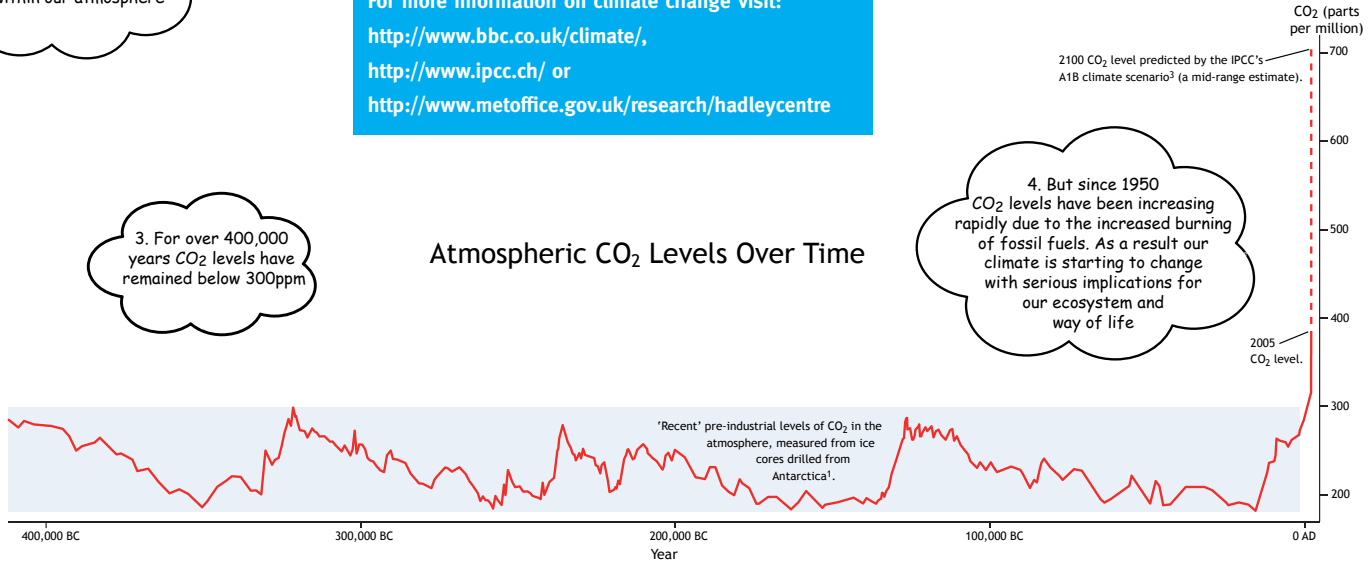
1. Carbon dioxide (CO₂) and other greenhouse gases trap heat from the sun within our atmosphere

3. For over 400,000 years CO₂ levels have remained below 300ppm

For more information on climate change visit:
<http://www.bbc.co.uk/climate/>,
<http://www.ipcc.ch/> or
<http://www.metoffice.gov.uk/research/hadleycentre>



4. But since 1950 CO₂ levels have been increasing rapidly due to the increased burning of fossil fuels. As a result our climate is starting to change with serious implications for our ecosystem and way of life



Atmospheric CO₂ Levels Over Time