

HOW TO ASSEMBLE YOUR GREEN JOHANNA

Tools required to assemble your Green Johanna



Philips Screwdriver



x24

Base Unit

Ring 1

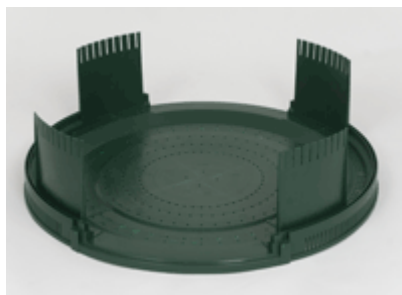
Ring 2

Ring 3

Ring 4



STEP 1



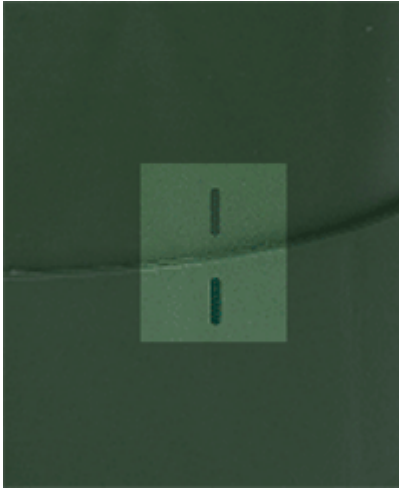
Place the base of the Johanna on a flat solid surface.

STEP 2



Place "Ring 1" (with door openings) over the base unit and screw together.

STEP 3



When fitting the rest of the rings together you must line up the "line marks" on the outside of the rings or the screw holes will **NOT** line up.

STEP 4



Place "Ring 2" over ring 1 and screw together.

STEP 5



Add all the rings as above until complete and screw together.

Slide in the doors and screw down tight and add the lid.

STEP 6

Your Johanna is now ready for use.

